



**REGIONAL SPECIALISED METEOROLOGICAL CENTRE-TROPICAL CYCLONES, NEW DELHI TROPICAL WEATHER OUTLOOK**

**DEMS-RSMC TROPICAL CYCLONES NEW DELHI DATED 21.05.2024**

**TROPICAL WEATHER OUTLOOK FOR NORTH INDIAN OCEAN (THE BAY OF BENGAL AND THE ARABIAN SEA) VALID FOR NEXT 168 HOURS ISSUED AT 0600 UTC OF 21.05.2024 BASED ON 0300 UTC OF 21.05.2024.**

**BAY OF BENGAL:**

AN UPPER AIR CYCLONIC CIRCULATION IN LOWER TROPOSPHERIC LEVELS LAY OVER SOUTHWEST BAY OF BENGAL AT 0300 UTC OF TODAY, THE 21ST MAY, 2024. UNDER ITS INFLUENCE, A LOW PRESSURE AREA IS VERY LIKELY TO FORM OVER SOUTHWEST BAY OF BENGAL BY 22ND MAY, 2024. IT IS VERY LIKELY TO MOVE NORTHEASTWARDS AND CONCENTRATE INTO A DEPRESSION OVER CENTRAL PARTS OF BAY OF BENGAL BY MORNING OF 24TH MAY, 2024. IT WOULD CONTINUE TO MOVE NORTHEASTWARDS AND INTENSIFY FURTHER THEREAFTER.

SCATTERED TO BROKEN LOW AND MEDIUM CLOUDS WITH EMBEDDED INTENSE TO VERY INTENSE CONVECTION LAY OVER SOUTH BAY OF BENGAL ADJOINING CENTRAL BAY OF BENGAL AND ANDAMAN SEA (MINIMUM CLOUD TOP TEMPERATURE  $-93^{\circ}\text{C}$ ). SCATTERED LOW AND MEDIUM CLOUDS WITH EMBEDDED WEAK TO MODERATE OVER REST OF BAY OF BENGAL.

**\*PROBABILITY OF CYCLOGENESIS (FORMATION OF DEPRESSION) DURING NEXT 168 HRS:**

| 24 HOURS | 24-48 HOURS | 48-72 HOURS | 72-96 HOURS | 96-120 HOURS | 120-144 HOURS | 144-168 HOURS |
|----------|-------------|-------------|-------------|--------------|---------------|---------------|
| NIL      | LOW         | MOD         | HIGH        | -            | -             | -             |

**\*NOTE: EVERY 24HR FORECAST IS VALID UPTO 0300 UTC (0830 IST) OF NEXT DAY**

**WIND WARNING:**

SQUALLY WEATHER WITH WIND SPEED REACHING 35-45 KMPH GUSTING TO 55 KMPH IS LIKELY OVER SOUTH BAY OF BENGAL ON 21ST AND 22ND MAY. IT WOULD GRADUALLY INCREASE BECOMING SQUALLY WIND SPEED REACHING 40-50 KMPH GUSTING TO 60 KMPH OVER CENTRAL AND ADJOINING SOUTH BAY OF BENGAL FROM 23RD MORNING. IT WOULD EXTEND TO ADJOINING AREAS OF NORTH BAY OF BENGAL WITH INCREASED WIND SPEED OF 50-60 KMPH GUSTING TO 70 KMPH FROM 24TH MORNING AND OVER NORTHEAST BAY OF BENGAL AND ADJOINING NORTHWEST AND EASTCENTRAL BAY OF BENGAL FROM 25TH MORNING FOR SUBSEQUENT 24 HOURS.

**SEA CONDITION:**

SEA CONDITION IS LIKELY TO BE MODERATE TO ROUGH OVER SOUTHWEST BAY OF BENGAL ON 21ST AND 22ND MAY, ROUGH TO VERY ROUGH OVER CENTRAL AND ADJOINING SOUTH BAY OF BENGAL FROM 23RD MAY AND OVER NORTH BAY OF BENGAL FROM 24TH MAY ONWARDS.

**FISHERMEN WARNING:**

FISHERMEN ARE ADVISED NOT TO VENTURE INTO CENTRAL AND ADJOINING SOUTH BAY OF BENGAL FROM 23RD MAY AND INTO NORTH BAY OF BENGAL FROM 24TH MAY ONWARDS. FISHERMEN OUT AT SEA ARE ADVISED TO RETURN TO THE COAST BEFORE 23RD MAY.

**ARABIAN SEA:**

SCATTERED TO BROKEN LOW AND MEDIUM CLOUDS WITH EMBEDDED INTENSE TO VERY INTENSE CONVECTION LAY OVER EASTCENTRAL ADJOINING SOUTHEAST ARABIAN SEA OFF KARNATAKA COAST & LAKSHADWEEP ISLANDS AREA COMORIN AREA MALDIVES AREA (MINIMUM CLOUD TOP TEMPERATURE  $-93^{\circ}\text{C}$ ). SCATTERED LOW AND MEDIUM CLOUDS WITH EMBEDDED MODERATE TO INTENSE CONVECTION LAY OVER SOUTHWEST & WESTCENTRAL ARABIAN SEA.

**\*PROBABILITY OF CYCLOGENESIS (FORMATION OF DEPRESSION) DURING NEXT 168 HRS:**

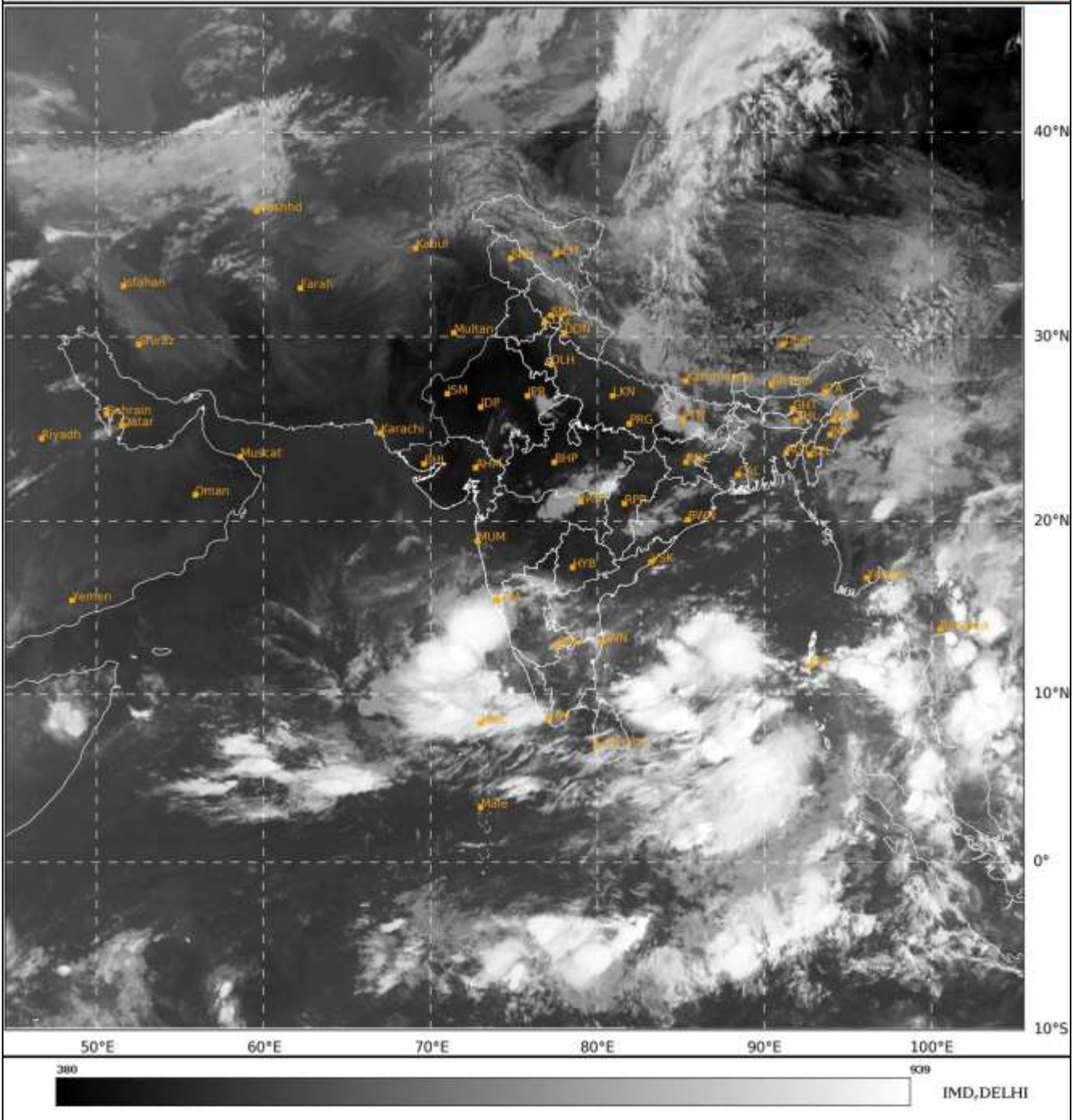
| 24 HOURS | 24-48 HOURS | 48-72 HOURS | 72-96 HOURS | 96-120 HOURS | 120-144 HOURS | 144-168 HOURS |
|----------|-------------|-------------|-------------|--------------|---------------|---------------|
| NIL      | NIL         | NIL         | NIL         | NIL          | NIL           | NIL           |

**\*NOTE: EVERY 24HR FORECAST IS VALID UPTO 0300 UTC (0830 IST) OF NEXT DAY**

**REMARKS:** NIL.

SAT : INSAT-3D IMG  
IMG\_TIR1 10.8 um  
LIC Mercator

21-05-2024/(0300 to 0326) GMT  
21-05-2024/(0830 to 0856) IST



Cloud distribution: (a) Isolated: <25%, Scattered:25-50%, Broken: 51-75%, Solid:>75%, Convection Intensity: (a) Weak: Cloud Top Temperature (CTT) >-25°C, (b) Moderate: CTT: - 25°C to -40°C, (c) Intense: CTT: - 41°C to -70°C and (d) Very Intense: : Less than -70°C  
PROBABILITY OF CYCLOGENESIS (FORMATION OF DEPRESSION):NIL: 0%, LOW: 1-33%, , MODERATE: 34-66% AND HIGH: 67-100%  
This is a guidance Bulletin for WMO/ESCAP Panel Member countries. Visit respective National websites for Country specific Bulletins